



## Plusline Small (double ended)

Plusline Small 200W R7s 230V 1BB

Mains-voltage linear with a coiled-coil filament, giving white halogen light

**PHILIPS**

# Plusline Small (double ended)

## Product data

### • General Characteristics

Cap-Base	R7s
Bulb	T4 [T4: .434 inch / 11mm]
Bulb Finish	Clear
Operating Position	any [Any or Universal (U)]
Life to 50% failures	2000 hr
Nominal Lifetime	2000 hr
Rated Lifetime (hours)	2000 hr
Rated Lifetime (years)	2 an

### • Light Technical Characteristics

Color Rendering Index	100 Ra8
Color Temperature	2900 K
Color Temperature Technical	2900 K
Luminous flux lamp	3520 Lm
Luminous Efficacy Lamp	17.6 Lm/W

### • Electrical Characteristics

Lamp Wattage	200 W
Lamp Wattage Technical	200.0 W
Voltage	230 V
Lamp Current	0.87 A
Dimmable	Yes
Starting Time	0.0 s

### • Environmental Characteristics

Energy Efficiency Label (EEL)	D
-------------------------------	---

### • Luminaire Design Requirements

Pinch Temperature	350 (max) C
Bulb Temperature	900 (max) C

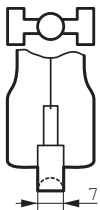
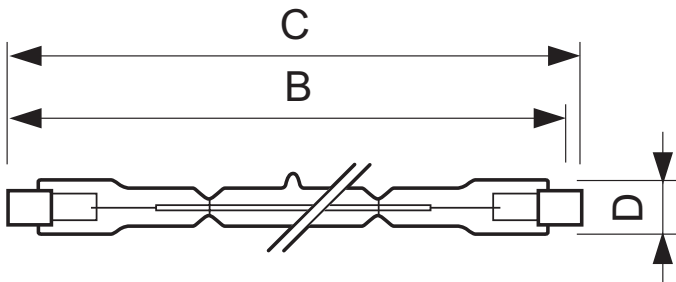
### • Product Dimensions

Insertion Length B	112.6 (min), 114.2 (nom), 115.8 (max) mm
Overall Length C	118 (max) mm
Diameter D	12 (max) mm

### • Product Data

Order code	923931743241
Full product code	923931743241
Full product name	Plusline Small 200W R7s 230V 1BB
Order product name	Plusline S 200W R7s 230V 1BB/10X10BOX
Pieces per pack	1
Packing configuration	10X10CC
Packs per outerbox	100
Bar code on pack - EAN1	8711500494375
Bar code on intermediate packing - EAN2	8711500501837
Bar code on outerbox - EAN3	8711500509031
Logistic code(s) - 12NC	923931743241
ILCOS code	HDG//RS-200-230-R7s-114,2
Net weight per piece	9.000 gr

## Dimensional drawing



R7s

### Plusline Small 200W R7s 230V 1BB

Product	B (Min)	B (Norm)	B (Max)	C (Max)	D (Max)
DESmall 200W R7s 230V T11 CL	112.6	114.2	115.8	118	12



© 2014 Koninklijke Philips N.V. (Royal Philips)  
All rights reserved.

Specifications are subject to change without notice. Trademarks are the property of Koninklijke Philips N.V. (Royal Philips) or their respective owners.

[www.philips.com/lighting](http://www.philips.com/lighting)

2014, October 31  
data subject to change